

April 10, 2008

FOR IMMEDIATE RELEASE

Theatrical Business Division
Oriental Land Co., Ltd.

Artisans de l'Imaginaire
CIRQUE DU SOLEIL THEATRE TOKYO
Grand Opening on October 1, 2008

URAYASU, CHIBA—Oriental Land Co., Ltd. announced that **Cirque du Soleil Theatre Tokyo**, a new permanent theater for the world-famous entertainment group Cirque du Soleil, will open at Tokyo Disney Resort® on October 1, 2008, during the Resort's 25th Anniversary celebrations.

An official website and a call center for group ticket reservations have opened to provide information.

Cirque du Soleil is developing an original show exclusively for this theater, adding an exciting new entertainment component to Tokyo Disney Resort. The Presenting Sponsor for the show will be JCB Co., Ltd.

Please see the attachments for more details.

Note: Information in this release has been updated as of April 10, 2008 based on information previously released on October 1, 2007.

For inquiries from the general public, please give the following contact number:

Cirque du Soleil Theatre Tokyo, Information Desk
0570-02-8777

- Scheduled to open on Friday, April 11 from 10:00 a.m.
- This number may not be accessible from some cell phones, IP phones or overseas numbers.
- Hours: 10:00 a.m. – 5:00 p.m. Closed during the year end and New Year's holiday.
- The above hours are subject to change without prior notice.

Attachment 1

CIRQUE DU SOLEIL THEATRE TOKYO

Opening Date:	October 1, 2008
Theater Name:	CIRQUE DU SOLEIL THEATRE TOKYO
Official Homepage:	www.cirquedusoleil.co.jp (PC or cell phone)
Location:	2-50 Maihama, Urayasu-shi, Chiba, Japan (Adjacent to Disney Ambassador® Hotel) Situated a 10-minute walk from JR Maihama Station (on the Keiyo and Musashino Lines) passing through Ikspiari® Parking is available at Ikspiari.
Number of Seats:	2,170 seats
Building:	7 floors above ground
Structure:	Steel framed
Building Height:	Approximately 35 m
Building Area:	Approximately 5,400 m ²
Total Floor Area:	Approximately 14,000 m ²
General Expenses:	Approximately 14 billion yen



Illustration of Theatre Exterior

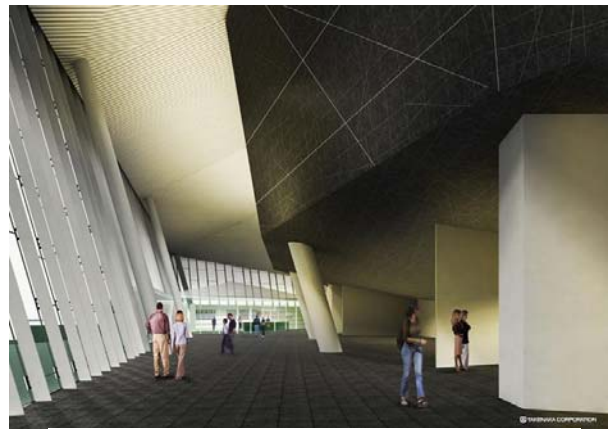


Illustration of Theatre Interior

CIRQUE DU SOLEIL THEATRE TOKYO

Show Information

Creators:

Guy Laliberté	Guide and Founder
François Girard	Writer and Director
Line Tremblay	Director of Creation
François Séguin	Set Designer
Renée April	Costume Designer
René Dupéré	Composer and Arranger
David Finn	Lighting Designer
Debra Brown	Choreographer
Jean-Jacques Pillet	Choreographer
François Bergeron	Sound Designer
Scott Osgood	Acrobatic Equipment and Rigging Designer
Florence Pot	Acrobatic Performance Designer
Eleni Uranis	Make-up Designer

Show Concept:

A new original show will be created exclusively for Cirque du Soleil Theatre Tokyo. The show follows the journey of a character who ultimately brings two completely opposing worlds, the sky and the earth, together in reconciliation and harmony. This dramatic show will be presented with a colorful array of unique and lively characters in vibrant costumes for a truly dynamic performance.

About François Girard, Director:

The director of this new show, François Girard, is renowned for his staging in both opera and theater. He is also known as an accomplished filmmaker, and captured the world's attention with *Thirty-Two Short Films about Glenn Gould* (Japan premiere in October 1994). His internationally acclaimed *The Red Violin* (Japan premiere in April 1999) received the Academy Award for Best Original Score and was nominated for the Golden Globe Award in the Best Foreign Film category. His newest film, *Silk* (based on the novel by Alessandro Baricco), opened nationwide in Japan on January 19, 2008. This film, which portrays the interaction of people from different cultural backgrounds, was shot mostly in Japan. The main characters, a silk trader and his wife in France,

are portrayed by Michael Pitt and Keira Knightley. Japanese actors Koji Yakusho and Miki Nakatani also appear in the film, with music provided by Ryuichi Sakamoto, Academy Award winner for Best Original Score to the film *The Last Emperor*.

About Line Tremblay, Director of Creation:

Since 1984, Line Tremblay has worked for Cirque du Soleil as a creator of Cirque du Soleil shows, including *Mystère*, *Alegría*, *Quidam*, “*O*” and *La Nouba*. To work on *Corteo*, she was named the first woman in Cirque’s history to occupy the position of Director of Creation. Her job is to produce a synergy and create an atmosphere of unity in the creative team. On top of it, Line takes part in recruiting the team and plays an active role in the casting of artists. As assuming her responsibility for bringing consistency and synergy to the creative team and overseeing the meshing of members’ individual artistic approach, Line recognizes her role as resembling an orchestra conductor.

Performance Time: About 135 minutes (including a 30-minute intermission)